



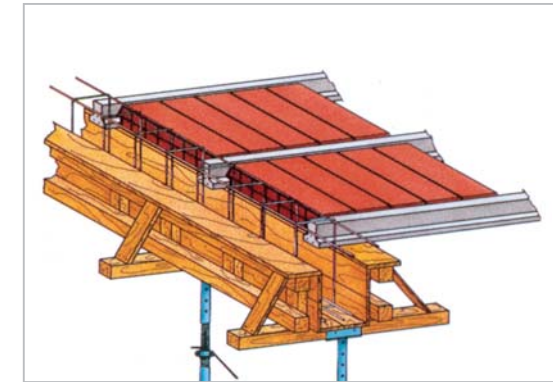
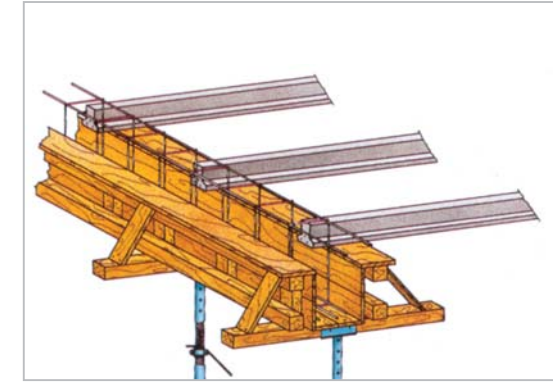
weiler. vario-flex flooring system

Easy. Adaptable. Economical.

The **weiler vario-flex** flooring system means modern construction based on the modular design.

Light floorings for private homes or heavy duty floorings for industrial applications are built with simple construction components.

vario-flex can be used for basements, floor and roofs.



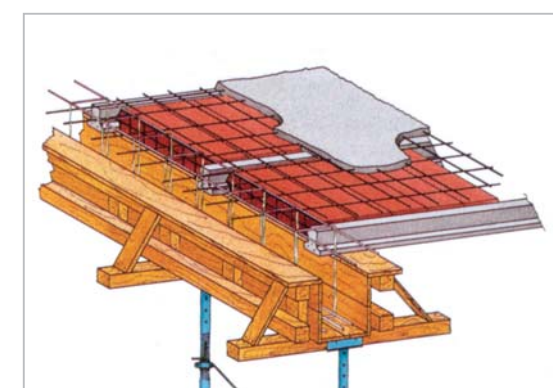
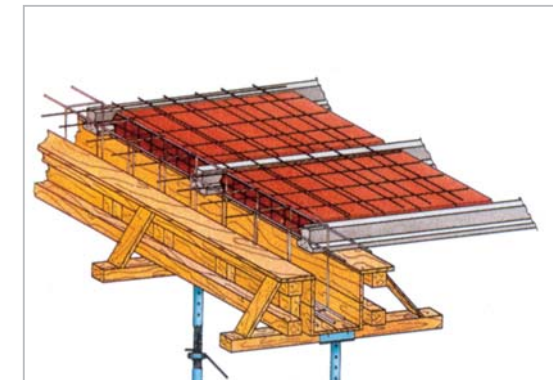
weiler. vario-flex flooring system

Easy handling, for guaranteed results

vario-flex consists of pre-stressed floor beams with variable heights and filler blocks, made of light weight concrete, clay, Styrofoam or similar materials.

Sand, crushed or round gravel and ordinary Portland cement - cement strength 35 MPa - and pre-stressing strands/wires of high quality (tensile strength: above 1650 N/mm²) are used as raw materials.

Depending on the type, the beams can be installed manually or with simple lifting equipment onto the supporting construction. Afterwards the filler blocks and as additional reinforcing a steel wire mesh are placed. Finally the cast-in-situ concrete is poured.



First the necessary pre-stressing wires are stretched and anchored at both ends of the beds.

Then several beams are formed and compacted in several layers simultaneously and side-by-side with the weiler MULTI-caster on beds up to 200 m (600 ft.) long.

The height of the produced beams – and therefore their load capabilities – can be set at the machine.

The zero slump concrete has a low water content and requires a minimum of cement – typical final concrete strength 55 MPa (7800 psi).

After curing the beams are cut out to desired length according to the individual projects.

In order to reduce the cutting costs, the green concrete may be cut during production with a guillotine installed on the weiler MULTI-caster so that only the exposed wires must be cut after curing.

This is even required in some countries according to their national codes for earthquake safety. The exposed wires ensure a perfect bond with the cast-in-situ concrete so that the entire finished floor will act as a monolithic diaphragm. After cutting to precise length, the beams are stacked and transported to storage area in complete bundles.



Wire laying



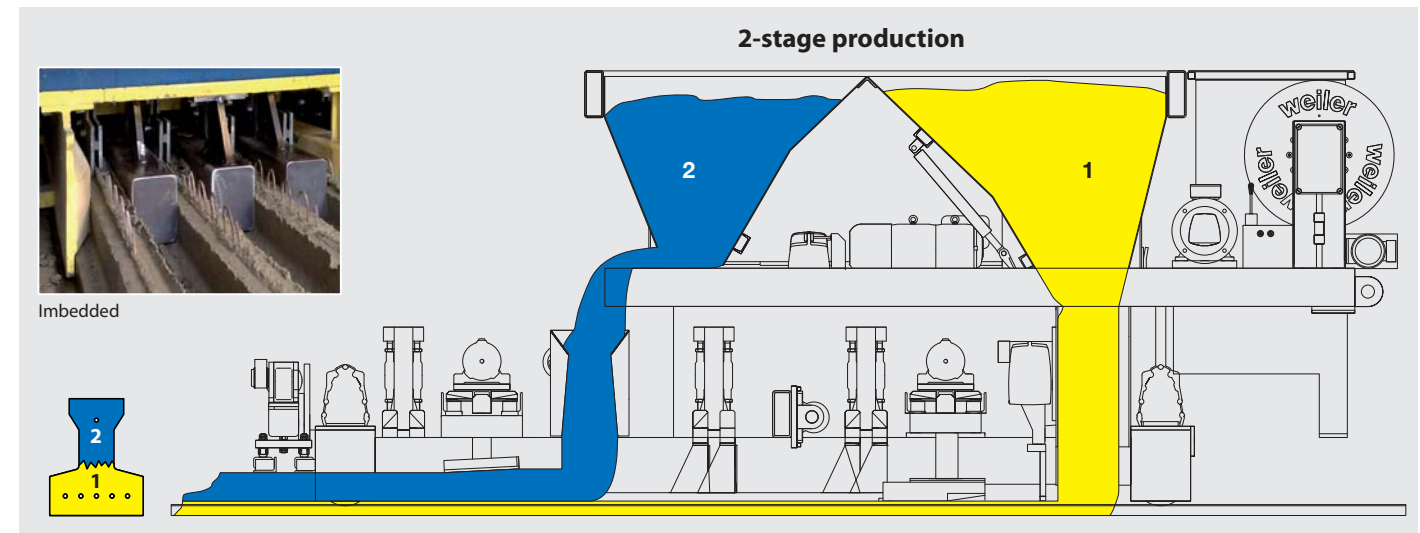
Pre-stressing



Finished Floor



Placing of concrete



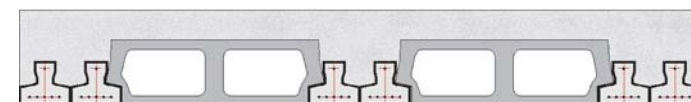
vario-flex. Multipurpose solutions for different applications



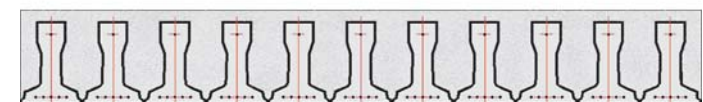
light: Simple construction with filler blocks made of light weight concrete or clay.



advanced: Floor construction for heavy loads with solid load bearing blocks.



regular: Floors with higher live loads with increased variable heights and double beam configuration.



heavy duty: Solid floor for highest load conditions.

weiler. vario-flex flooring system.

Variety offers design flexibility.

Cutting



Lifting



Stacking

